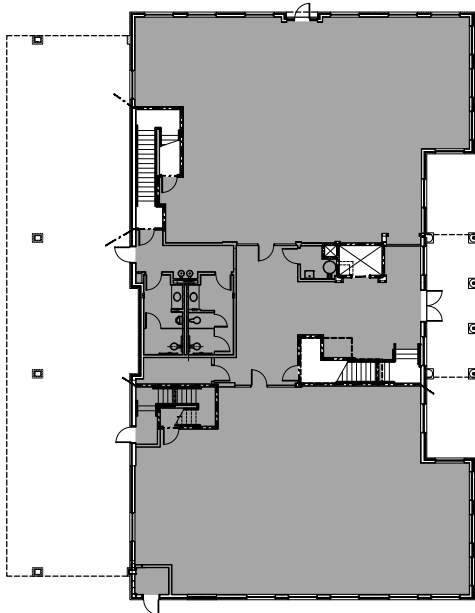
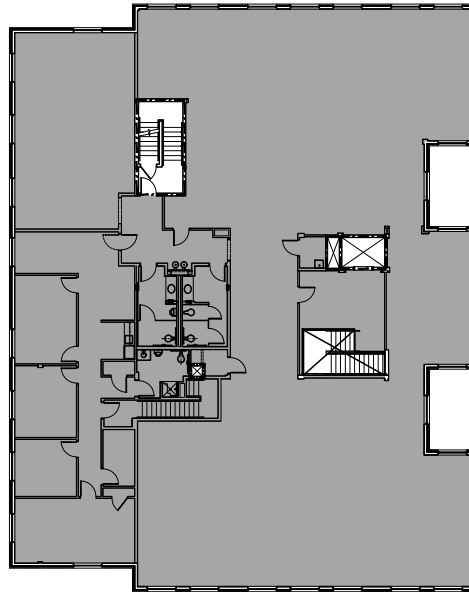


Rentable / Usable Ratio

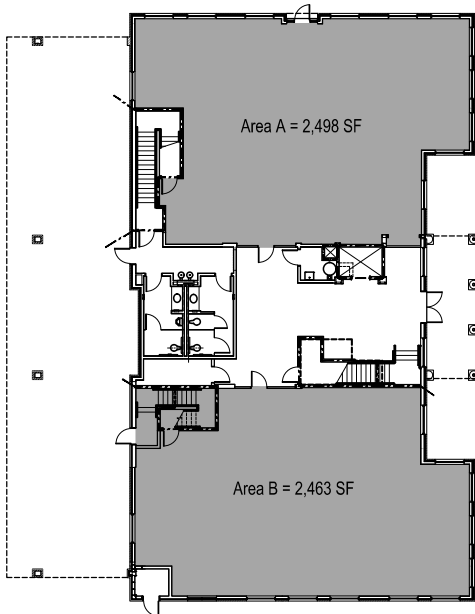


Rentable Area 1st Floor = 6,294 SF

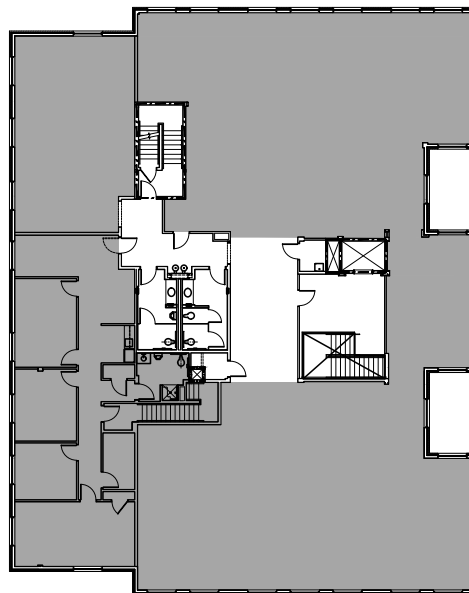


Rentable Area 2nd Floor = 9,096 SF

Building Rentable Area (Total) = 15,390 SF



Floor Usable Area 1st Floor
 Area A = 2,498 s.f.
 Area B = 2,463 s.f.
 Total = 4,961 s.f.



Floor Usable Area 2nd Floor
 Area = 8,213 s.f.

Floor Useable Area Both Floors = 12,851 SF

* Rentable / Usable Ratio is the Building Rentable Area / Floor Usable Area

Building Rentable Area (Total) = 15,390 SF
 Floor Usable Area Both Floors = 12,851 SF

Rentable/Usable Ratio = 1.20

(A useable office space of 2,000 SF x 1.20 = 2,400 SF Rentable)

