



THE WOODMONT COMPANY

2100 W. 7TH STREET
FORT WORTH, TX 76107

CONTACT: CRAIG PINCOCK
PHONE: 817-377-7169
EMAIL: CPINCOCK@WOODMONT.COM

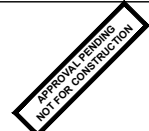


7280 Shalstead Station | Indianapolis, Indiana 46296
TEL: 317.547.5555 | FAX: 317.543.0270
www.structurepoint.com

CONTACT: CHAD JAMES
PHONE: 317-547-5550
EMAIL: CJAMES@STRUCTUREPOINT.COM

KIDDIE ACADEMY - CHATHAM COMMONS

NWC OF CHAD HITTLE DR. AND 191ST STREET WESTFIELD, INDIANA



CERTIFIED BY

ISSUANCE INDEX

DATE:	03/01/2019
PROJECT PHASE:	CONSTRUCTION DOCUMENTS

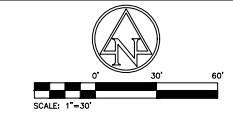
REVISION SCHEDULE

NO.	DESCRIPTION	DATE

Project Number 2018.01516

SITE PLAN

C200



EXISTING LEGEND

- CHAIN LINK FENCE
- BOARD FENCE
- BURIED GAS LINE
- OVERHEAD ELECTRIC LINE
- OVERHEAD TELEPHONE LINE
- TELEPHONE PEDESTAL
- UTILITY POLE
- UTILITY POLE W/ TRANS.
- SIGN
- GAS VALVE
- GAS LINE MARKER
- GUY WIRE
- MAILBOX
- 5/8" REBAR FOUND
- TEMPORARY ENCLOSURE
- EXISTING CONTOUR
- 800.32 EXISTING SPOT ELEVATION
- 160' W. FEMA FLOOD PLAN PER NOV. 18, 2014 PANEL 1805700090
- 120' W. FEMA FLOODWAY PER NOV. 18, 2014 PANEL 1805700090

SITE LEGEND

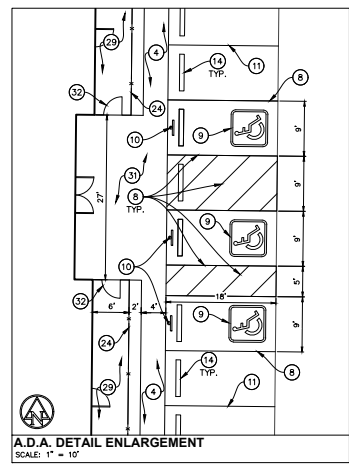
- LIGHT DUTY ASPHALT PAVEMENT
- HEAVY DUTY ASPHALT PAVEMENT
- CLASS III DRIVE PER INDOT STANDARD DETAIL
- CONCRETE PAVEMENT
- ASPHALT PATH

SITE DATA TABLE

SITE ZONING:	PLD
PROJECT AREA:	1.98± ACRES
BUILDING AREA:	10,500 SF
SITE IMPERVIOUS AREA:	0.73± ACRES
STANDARD PARKING (9'x15'):	29
ADA PARKING PROVIDED (INCLUDES 1 VAN ACCESSIBLE):	3
TOTAL PROPOSED PARKING:	32

KEYNOTES

1. 6" CONCRETE CURB
2. 24" CONCRETE CURB & OUTER
3. 24" DEPRESSED CONCRETE CURB
4. 4" WIDE CONCRETE SIDEWALK (PER CITY OF WESTFIELD DETAILS)
5. COMBINED CONCRETE CURB & WALK
6. CURB TAPER
7. ADA ACCESSIBLE RAMP TYPE 'G'
8. ADA PARKING SPACE (4" BLUE PAINT STRIPE)
9. ADA PARKING SYMBOL
10. ADA ACCESSIBLE PARKING SIGN
11. PARKING SPACE (4" WHITE PAINT STRIPE)
12. TRANSFORMER PAD PER UTILITY COMPANY STANDARDS
13. DUMPSTER PAD
14. CONCRETE WHEEL STOP
15. STOP SIGN (PER CITY OF WESTFIELD DETAILS)
16. CONCRETE BOLLARD
17. 24" STOP BAR, PAINT WHITE
18. PROPOSED 5' PLAYGROUND FENCE (REFER TO ARCHITECTURAL PLANS FOR DETAILS)
19. DUMPSTER ENCLOSURE (REFER TO ARCHITECTURAL PLANS FOR DETAILS)
20. 6" WOODEN FENCE
21. 6" ASPHALT PATH (PER CITY OF WESTFIELD DETAILS)
22. ADA ACCESSIBLE RAMP TYPE 'H'
23. PROPOSED MONUMENT SIGN (REFER TO ARCHITECTURAL PLANS FOR DETAILS)
24. PROPOSED 4" FENCE (REFER TO ARCHITECTURAL PLANS FOR DETAILS)
25. SET OF DOUBLE 2" GATES (REFER TO ARCHITECTURAL PLANS FOR DETAILS)
26. ADA ACCESSIBLE RAMP TYPE 'K'
27. PROPOSED RETAINING WALL (REFER TO STRUCTURAL ENGINEERING PLANS AND DETAILS)
28. CONCRETE FILLED 4" STEEL PIPE BOLLARDS AT 5' 0" C-C (REFER TO ARCHITECTURAL PLANS FOR DETAILS)
29. 6" WIDE CONCRETE SIDEWALK (PER CITY OF WESTFIELD DETAILS)
30. 5' WIDE CONCRETE SIDEWALK (PER CITY OF WESTFIELD DETAILS)
31. CONCRETE SIDEWALK (PER CITY OF WESTFIELD DETAILS)
32. 4" WIDE GATE (REFER TO ARCHITECTURAL PLANS FOR DETAILS)



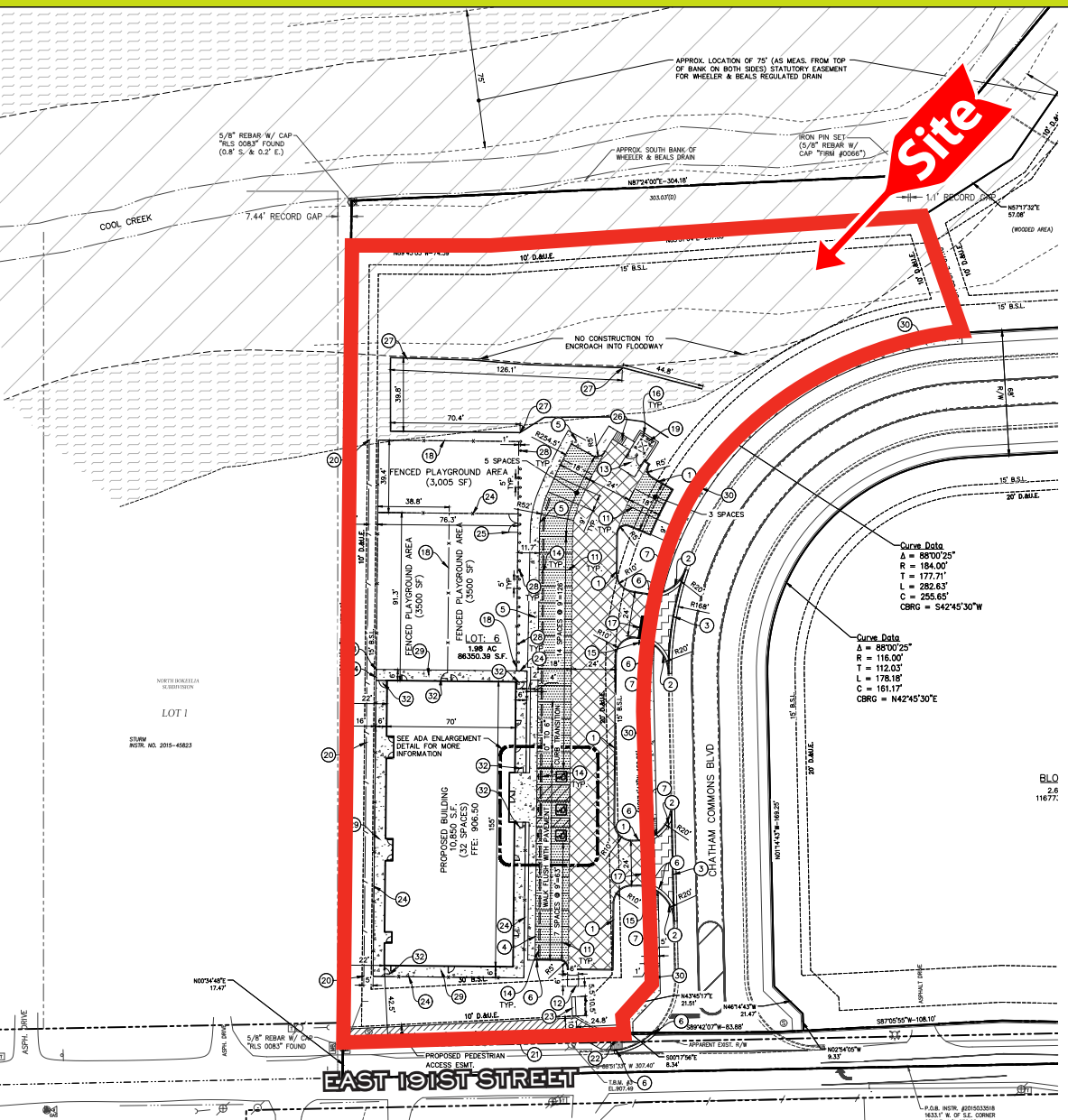
GENERAL NOTES:

1. CONTRACTOR SHALL PROTECT AND NOT DESTROY THE PROPERTY CORNER MONUMENTS DURING CONSTRUCTION.
2. CONTRACTOR TO VERIFY LOCATION, SIZE AND DEPTH OF EXISTING UTILITIES PRIOR TO COMMENCING ANY CONSTRUCTION. CONTACT ENGINEER IF VARIATION EXISTS.
3. SEE SHEET C002 GENERAL NOTES FOR MORE INFORMATION.
4. UTILITY CROSSINGS (BORE/JACK AND BORE), AVOID OPEN CUTS.
5. ADDITIONAL EROSION CONTROL MEASURES MAY BE REQUIRED IN THE FIELD BY MHWI INSPECTOR.

II. CAUTION II

THE LOCATIONS OF ALL EXISTING UNDERGROUND UTILITIES SHOWN ON THIS PLAN ARE BASED UPON ABOVE GROUND EVIDENCE (including, but not limited to, manholes, shafts, valves, and meter risers upon the ground by others) AND ARE SPECULATIVE IN NATURE. THERE MAY ALSO BE OTHER EXISTING UNDERGROUND UTILITIES FOR WHICH THERE IS NO ABOVE GROUND EVIDENCE OR FOR WHICH NO ABOVE GROUND EVIDENCE WAS OBSERVED. THE EXACT LOCATIONS OF SAID EXISTING UNDERGROUND UTILITIES SHALL BE VERIFIED BY THE CONTRACTOR PRIOR TO ANY AND ALL CONSTRUCTION.

CALL TOLL FREE
*811 OR 1-800-325-5544
— INDIANA UNDERGROUND —



*subject to change